

The purpose of this document is to provide information on the results of operation of the French public transmission network and power system during the past month. Information sources: ERDF, METEOPFRANCE, electricity generators, RTE. The data published are correct as of 9 September 2011, unless indicated otherwise.

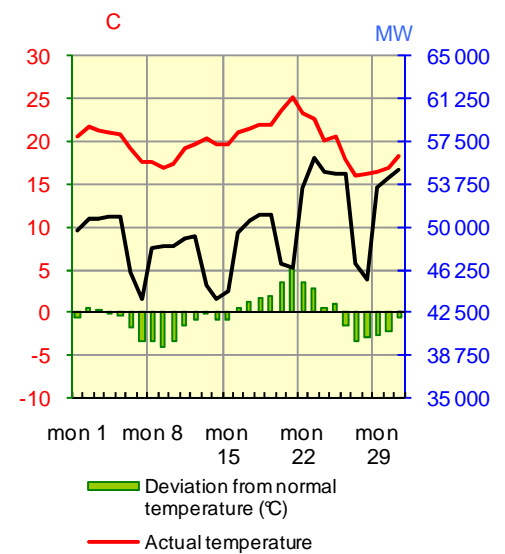
### INTERNAL ELECTRICITY CONSUMPTION - perimeter France

#### Results at end of past month

	August 2011	Trend since August 2010	Cumulative trend since Jan 1 <sup>st</sup>	Cumulative trend over last 12 months
National consumption	32.5 TWh	-1.7%	-5.0%	-0.7%
Adjusted consumption *	32.5 TWh	-2.1%	+0.0%	+0.6%

Temperature	
Monthly average	19.9 °C
Deviation from ref. value	-0.3 °C/ reference
Deviation from August 2010	+0.6 °C

RTE-in house references drawn up on basis of METEOPFRANCE data



The month of August saw an average temperature equal to 19.9°C; temperatures remained mostly below reference values on 19 days of the month (3.9°C lower on the 9th), and above reference values on 12 days (5.2°C higher on the 21st).

Gross consumption fell by 1.7% compared with August 2010. Adjusted for meteorological contingencies, monthly consumption was down by 2.1% compared with August 2010, continuing the trend observed in July (-3.0%), June (-1.9%) and April (-0.9%); excluding the energy sector, consumption rose by 0.7%.

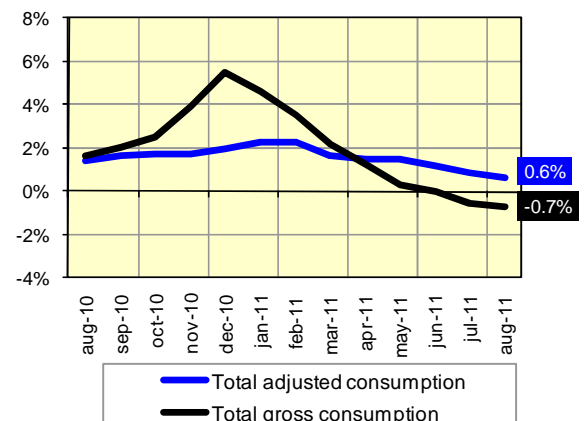
#### Cumulative trend over last 12 months

In cumulative figures over a 12 month period, gross consumption was down by 0.7% on August 2010; the rate of growth in gross consumption has been falling steadily since December 2010 (+5.5%).

The rate of growth in adjusted consumption\* was 0.6% at the end of August, having been slowing steadily since April (+1.5%), following a rise in excess of 2% at the end of February and January; excluding the energy sector, adjusted consumption was up by 1.4% at the end of August, following rises of +1.7% recorded at the end of June, +2.0% at the end of March and +2.5% at the end of February.

\* adjusted for the impact of meteorological contingencies in winter and summer

Evolution of National consumption in sliding year



## BALANCE OF ELECTRICAL ENERGY IN FRANCE

### Results at end of past month

	August 2011 (GWh)	Deviation from August 2010 (GWh)	Trend vs. August 2010	Cumulative trend since Jan 1 <sup>st</sup>	Cumulative trend over last 12 months
<b>NET GENERATION</b>					
Nuclear	31 383	-1 008	-3.1%	+6.1%	+7.1%
Fossil-fuel thermal	1 772	+192	+12.1%	-13.0%	-6.9%
Hydro	3 879	-469	-10.8%	-27.7%	-13.1%
Wind	680	-4	-0.6%	+16.3%	+11.4%
Other renewables *	688	+183	+36.4%	+34.3%	+30.4%
<b>Total net generation</b>	<b>38 402</b>	<b>-1106</b>	<b>-2.8%</b>	<b>+0.2%</b>	<b>+3.5%</b>
<b>GROSS INTERNAL CONSUMPTION</b>					
Consumers directly connected to the RTE grid **	5 759	-953	-14.2%	-5.8%	-1.9%
Other consumers and losses on all networks ***	26 770	+404	+1.5%	-4.8%	-0.4%
<b>Total gross internal consumption</b>	<b>32 529</b>	<b>-549</b>	<b>-1.7%</b>	<b>-5.0%</b>	<b>-0.7%</b>
<b>Energy extracted for pumping</b>	<b>546</b>	<b>+4</b>	<b>+0.7%</b>	<b>+8.5%</b>	<b>+9.0%</b>
<b>Balance of physical exchanges ****</b>	<b>5 327</b>	<b>-561</b>	<b>-9.5%</b>	<b>+72.6%</b>	<b>+83%</b>

\* mainly: household waste, paper waste, biogas, solar

\*\*\* SMEs, professional and individual consumers served by the distribution networks, generation auto-consumed by industrials at their sites, losses on the transmission and distribution networks

\*\* extractions by these consumers on the RTE network

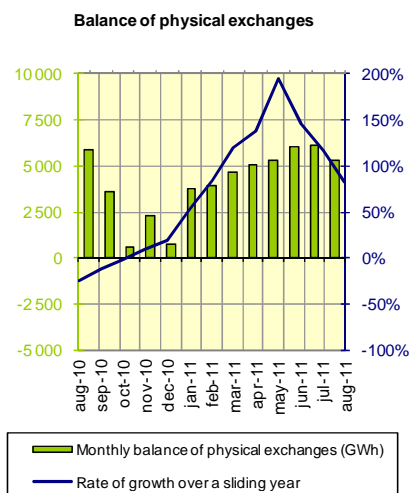
\*\*\*\* A negative value indicates a net import balance, whilst a positive value indicated a net export balance

Monthly hydro-electric generation was lower in August 2011 than in August 2010 (by 10.8%), but the drop was less marked than those observed between February and July (with rates varying from -23% to -47%); the level of output this month (3 879 GWh) was similar to that recorded in 2009 (3 867 GWh). In cumulative terms since the start of 2011, hydro-electric generation is down by 27.7%.

Generation from renewable sources other than hydro and wind power has shown monthly growth in excess of 30% since March, thanks to threefold growth in solar power over the first eight months of 2011, compared with the first eight months of 2010.

### The balance of physical exchanges

In August 2011, the balance of exchanges remained positive (i.e. France continued to export energy) at all times and reached 5 327 GWh; it is down by 0.6 TWh on August 2010 (-9.5%). The last fall in the monthly exchange balance was in May 2010. In cumulative terms since the start of the year, the export balance is 1.7 times higher than 2010, which was relatively stable compared with the first eight months of 2009.

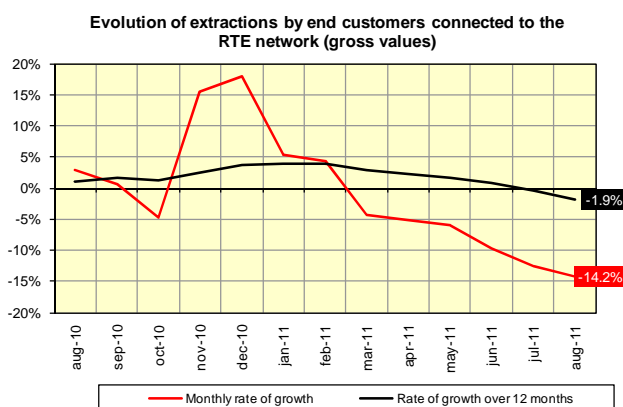


### Extractions by heavy industry

In August 2011, the rate of growth in monthly extractions by consumers connected directly to the RTE network was down on the previous year (-14.2% compared with August 2010), in line with the decrease observed in July (-12.7%) to March 2011 (-4.3%).

Excluding the energy sector, the monthly growth rate remained negative (-0.9%) as in July (-0.4%), having slowed steadily in the first half of the year (+1.9% in June, +4.7% in March 2011, +12.4% in December 2010); extractions in August 2011 were 6.5% higher than in August 2009, but nonetheless down by 7.6% on August 2008 and by 7.9% on August 2007.

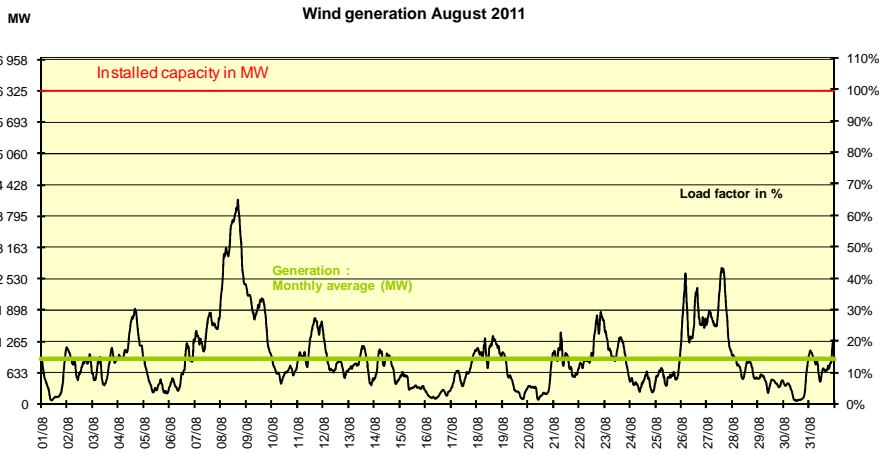
The rate of growth in extractions by consumers connected directly to the RTE network, over a sliding year, continues to slow (-1.9%), following the figure of -0.5% recorded in July 2011; it has been slowing steadily since March (+2.8%), after reaching a plateau around +3.8% over the period December 2010-February 2011.



**Wind generation over the past month**

**Wind generation and installed capacity**

As of the end of August, installed capacity was 6 325 MW. Average wind generation for the month was 911 MW. The month of August 2011 saw less wind than August 2010. The load factor was 14%, compared with 18% in August 2010 (when average generation was 917 MW for installed capacity of around 5 100 MW).

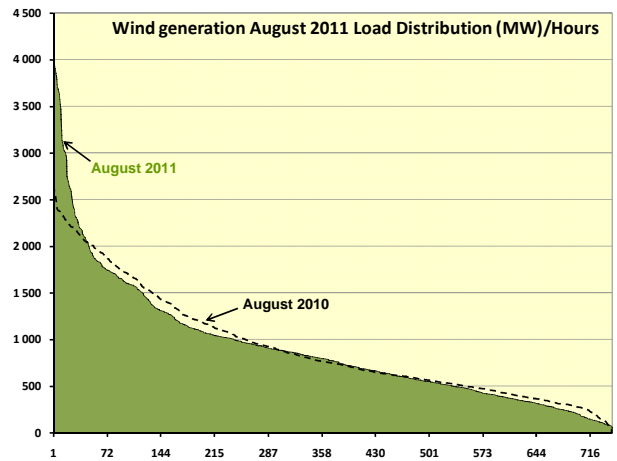


Wind generation August-11			
August-11	Wind generation (MW)	Load factor (%)	Date/ time
Max value	4 098	65%	Mon 8 <sup>th</sup> at 5pm
Mean value	911	14%	
Min value	70	1%	Tues 30 <sup>th</sup> at 1pm

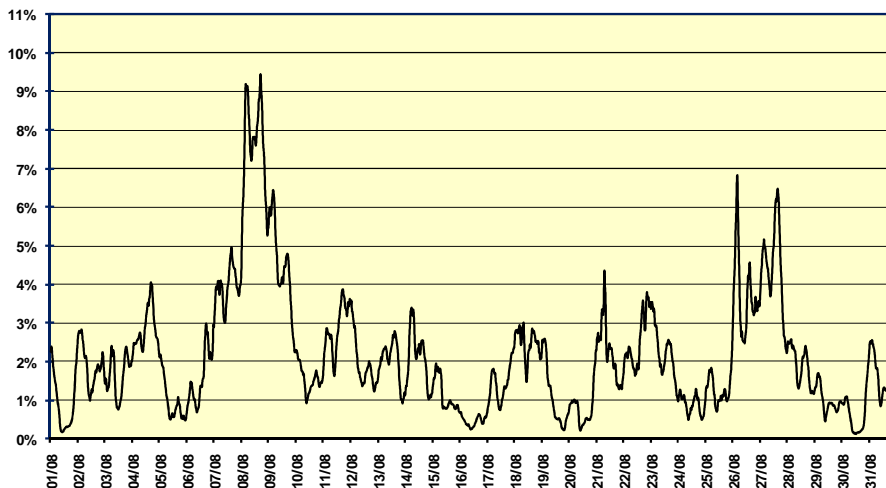
**Hourly coverage rate**

The average rate of coverage of demand by wind generation was 2.1%, as in August 2010.

August-11	Coverage rate	Date/ time	Wind generation	Consumption
Mean value	2.1%			
Max value	9.4%	Mon 8 <sup>th</sup> at 5pm	4 098 MW	43 408 MW
Value at consumption peak	2.0%	Tues 23 <sup>rd</sup> at 12.30pm	1 104 MW	56 017 MW



**Rate of coverage of consumption by wind generation (%)**



**EXTREME values for consumption, exchanges – perimeter France\***

		August			Last 12 months			Absolute **		
Gross internal consumption	Maximum	1 171 GWh	Weds 31	2 096 GWh	15/12/2010	2 096 GWh	15/12/2010	2 096 GWh	15/12/2010	
		56 017 MW	Tues 23	96 710 MW	15/12/2010	96 710 MW	15/12/2010	96 710 MW	15/12/2010	
	Minimum	894 GWh	Sun 7	894 GWh	07/08/2011	894 GWh	07/08/2011	894 GWh	07/08/2011	
		31 037 MW	Sun 7	31 037 MW	07/08/2011	31 037 MW	07/08/2011	31 037 MW	07/08/2011	
Balance of physical exchanges ***	Maximum	221 GWh	Tues 9	277 GWh	15/01/2011	298 GWh	08/05/2008	298 GWh	08/05/2008	
		10 359 MW	Mon 8	13 887 MW	16/01/2011	13 887 MW	16/01/2011	13 887 MW	16/01/2011	
	Minimum	100 GWh	Sat 13	-117 GWh	21/10/2010	-140 GWh	16/12/2009	-140 GWh	16/12/2009	
		1 124 MW	Sat 13	-7 111 MW	18/10/2010	-7 795 MW	06/01/2010	-7 795 MW	06/01/2010	

\* Excl. Corsica \*\* The minimum values concern the last 30 years for the physical exchange balance, and the last 5 years for consumption.

\*\*\* A positive value indicates a net export balance, a negative value indicates a net import balance.

**THE ELECTRICITY MARKET****CONTRACTUAL CROSS-BORDER ELECTRICITY EXCHANGES**

	EXPORTS			IMPORTS			CUMULATIVE VOLUME OF EXCHANGES			EXPORT BALANCE *		
	Aug 2011 GWh	Trend vs Aug-10	Cum. trend since Jan 1 <sup>st</sup>	Aug 2011 GWh	Trend vs Aug-10	Cum. trend since Jan 1 <sup>st</sup>	Aug 2011 GWh	Trend vs Aug-10	Cum. trend since Jan 1 <sup>st</sup>	Aug 2011 GWh	Trend vs Aug-10	Cum. trend since Jan 1 <sup>st</sup>
Belgium	547	43%	133%	141	-37%	-72%	688	14%	19%	406	156%	n.s.**
Germany	1 164	-30%	12%	428	-23%	-48%	1 592	-28%	-23%	736	-34%	n.s.**
Switzerland	2 197	0%	9%	109	-37%	-52%	2 306	-3%	-1%	2 088	3%	24%
Italy	778	-6%	-8%	0	-100%	11%	778	-7%	-8%	778	-6%	-9%
Spain	689	40%	96%	83	-27%	-18%	772	28%	22%	606	60%	n.s.**
GB	666	-50%	-6%	68	70%	-50%	734	-47%	-23%	598	-54%	57%
<b>TOTAL</b>	<b>6 041</b>	<b>-12%</b>	<b>12%</b>	<b>829</b>	<b>-25%</b>	<b>-48%</b>	<b>6 870</b>	<b>-14%</b>	<b>-8%</b>	<b>5 212</b>	<b>-10%</b>	<b>+74%</b>

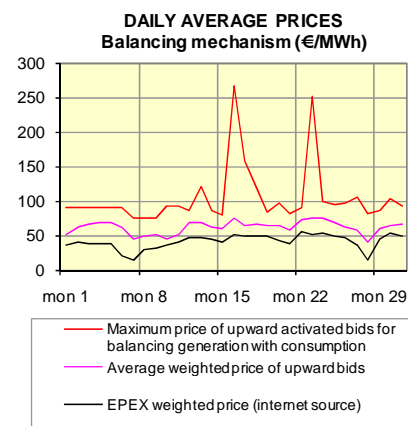
\*\* A negative value indicates a net import balance \*\*\* in cumulative terms since 1<sup>st</sup> January 2011, the overall balance shows total net exports to Belgium of 5 092 GWh (compared with net imports of 625 GWh over the same period in 2010), and net exports of 2 873 GWh to Germany (compared with net imports of 2 960 GWh over the same period in 2010); net exports to Spain total 563 GWh (compared with net imports of 1 114 GWh over the same period in 2010).

France has been a net exporter of electrical energy to Spain since May 2011, and to Germany since April 2011.

**BALANCING MECHANISM - BALANCE RESPONSIBLE ENTITIES**

	August 2011	Deviation from August-10	Trend vs. August-10	Cum. trend since Jan 1 <sup>st</sup>
<b>Balancing Mechanism</b>				
Total energy activated upward	296 GWh	+22 GWh	+8%	-26%
Total energy activated downward	230 GWh	-15 GWh	-6%	+5%
Number of parties	39	+1		
<b>Exchanges between Balance Responsible entities* via (NEBs)</b>				
Energy exchanged between BRs via NEBs	24 859 GWh	+1639 GWh	+7%	+4%
Number of BRs	158	+3		

\* Balance Responsible Entity: any legal entity who is committed to RTE, under a Balance Responsible contract, to settling the costs of the imbalances calculated retrospectively, on behalf of one or more network users attached to its scope. These imbalances result from the difference between all of the supplies and consumption for which it is responsible.

**NEW or REFURBISHED INSTALLATIONS**

In August, the following RTE installations were electrified for the first time: the 225 kV **Seine-Saint Ouen (substation) n°2** underground line, at the Seine site in Seine-Saint-Denis; the 225 kV **substation at Guebwiller**, connected to the **Logelbach-Vogelgrun** overhead line, and a new 225/63 kV (100 MVA) transformer near Colmar in the Haut Rhin department; the 225 kV **Chalons-Champvans n°1 overhead line** in the Saône et Loire, Côte d'Or and Jura departments; a new 225/63 kV (170 MVA) transformer at the **Pressy** substation in Haute Savoie, near Cluses; the 90 kV **Avranches-Launay n°1 underground line** near Avranches in the Manche department; the 63 kV **Palaiseau-St Aubin n°1** overhead-underground line in Essonne, following work to install part of the line underground.