

OVERVIEW OF ELECTRICAL ENERGY

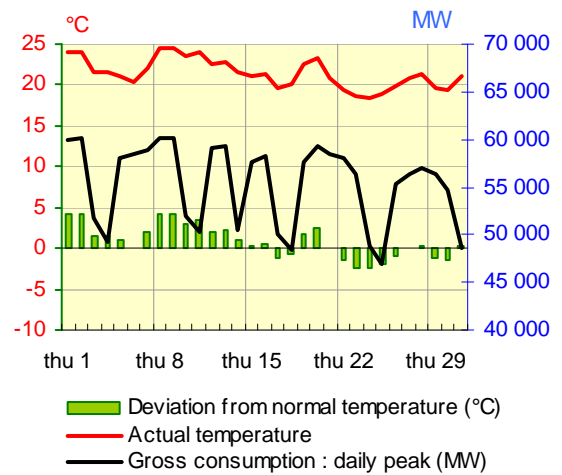
JULY 2010

The purpose of this document is to provide information on the results of operation of the French public transmission network and power system during the past month. Information sources: ERDF, METEOFRANCE, electricity generators, RTE. The data published are correct as of **9 August 2010**, unless indicated otherwise.

INTERNAL ELECTRICITY CONSUMPTION - perimeter France

Results at end of past month

	July 2010		Trend compared with July 2009	Cumulative trend since 1st January	Trend over last 12 months
National consumption	36.1 TWh		+2.3%	+4.5%	+1.6%
Adjusted consumption *	35.8 TWh		+1.4%	+2.0%	+1.2%



Temperature

Monthly average	21.4 °C
Deviation from norm	+0.9 °C/norm
Deviation from July 2009	+1.2 °C

RTE-in house reference drawn up on basis of METEOFRANCE data

Despite temperatures fluctuating around normal values within a wide range (from +4.3°C at the beginning of this month to -2.4°C on the 24th of the month), climatic conditions in July only led to a moderate increase in electricity consumption, of around 0.3 TWh (+0.9%). In July 2010 with the average temperature higher by 1.2°C compared to July 2009, the gross consumption rose by 2.3%. Adjusted for the impact of climatic contingencies, monthly consumption is up by 1.4%, the increase being slightly down compared to the values observed in April, May and June 2010.

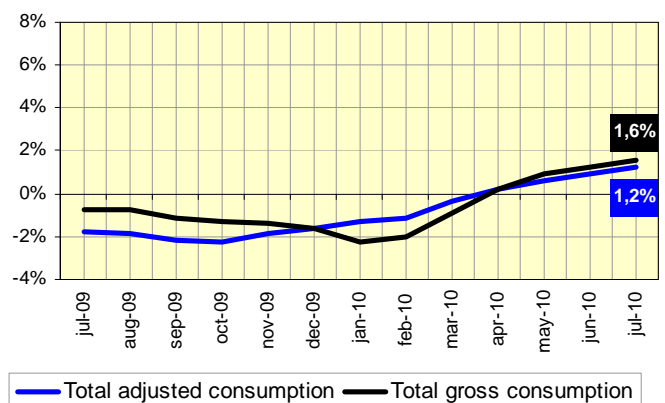
Cumulative trend over last 12 months

Gross consumption in cumulative figures over a 12 month period shows an increase by +1.6% at the end of July 2010, following growth of +1.3% at the end of June 2010 and +1.0% at the end of May 2010.

The rise in adjusted consumption* that began in October 2009 is continuing. The rate of growth in adjusted consumption, which returned to a positive value in April, showed an increase of 1.2% at the end of July.

* adjusted for the impact of climatic contingencies in winter and summer

Evolution of National consumption in sliding year



BALANCE OF ELECTRICAL ENERGY IN FRANCE

Results at end of past month

	July 2010 (GWh)	Deviation from July 2009 (GWh)	Change since July 2009	Cumulative trend since 1st January	Trend over last 12 months
NET GENERATION					
Nuclear	31 744	+2 844	+9.8%	+0.8%	-3.9%
Fossil-fuel thermal generation	2 990	+622	+26.3%	+16.5%	+14.9%
Hydro-electric	5 451	+579	+11.9%	+0.6%	-6.5%
Wind	487	-76	-13.4%	+36.5%	+44.2%
Other renewable sources *	438	+39	+9.9%	+15.3%	+14.9%
Total net generation	41 110	+4 008	+10.8%	+2.8%	-1.6%
GROSS INTERNAL CONSUMPTION					
Consumers directly connected to the RTE grid **	7 397	+114	+1.6%	+2.3%	-0.1%
Other consumers and losses on all networks ***	28 685	+699	+2.5%	+4.9%	+1.9%
Total gross internal consumption	36 082	+813	+2.3%	+4.5%	+1.6%
Energy extracted for pumping	442	-73	-14.2%	-13.8%	-12.2%
Balance of physical exchanges ****	4 586	+3 268	+248%	-17.4%	-41.8%

* mainly: household waste, paper waste, biogas, solar

*** SMEs, professional and individual consumers served by the distribution networks, generation auto-consumed by industrials at their sites, losses on the transmission and distribution networks

** extractions by these consumers on the RTE network

**** A negative value indicates a net import balance

Monthly nuclear generation showed a sharp rise in July (+9.8%) in continuation of the trend set in June (+9.0%), following more moderate increases in March (+0.1%) and April (+1.4%) and the drop in May 2010 (-1.7%).

Development in the balance of physical exchanges

The balance of exchanges remained positive (i.e. France remained a net exporter) through the month of July 2010. The monthly balance reached 4 586 GWh, up strongly compared to July 2009, and at a similar level to that recorded in July 2008. However, it is down by 17.4% since the start of 2010, as compared with the same period in 2009. Over the month, the balance of exchanges was negative (i.e. France imported power) at certain hourly points over 2 days.

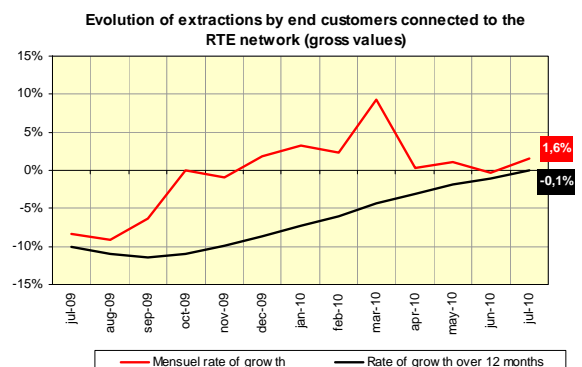
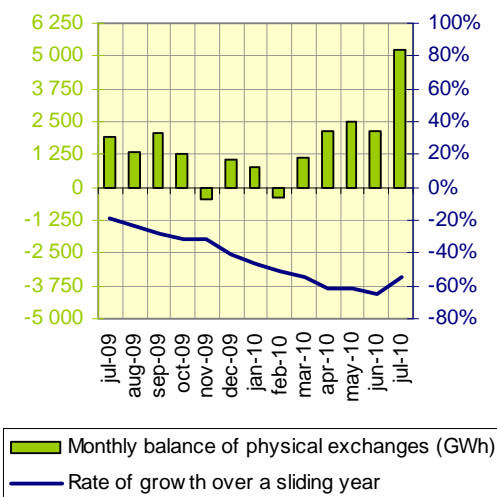
Development of extractions by heavy industry

In July 2010, monthly extractions by consumers connected directly to the RTE network was on the rise once again (by +1.6%), after a slight decline recorded in June. Since 1st January 2010, they have recorded an increase by 2.3% over the same period in 2009.

Outside the energy sector, the monthly growth rate in July remained high at +5.0%, following rates of +8.6% in April, +10.8% in May and 5.1% in June.

The rate of growth in extractions by consumers connected directly to the RTE network, over a sliding year, continues the improvement which began in October 2009; it rose from -7.3% at the end of January 2010 to -0.1% at the end of July.

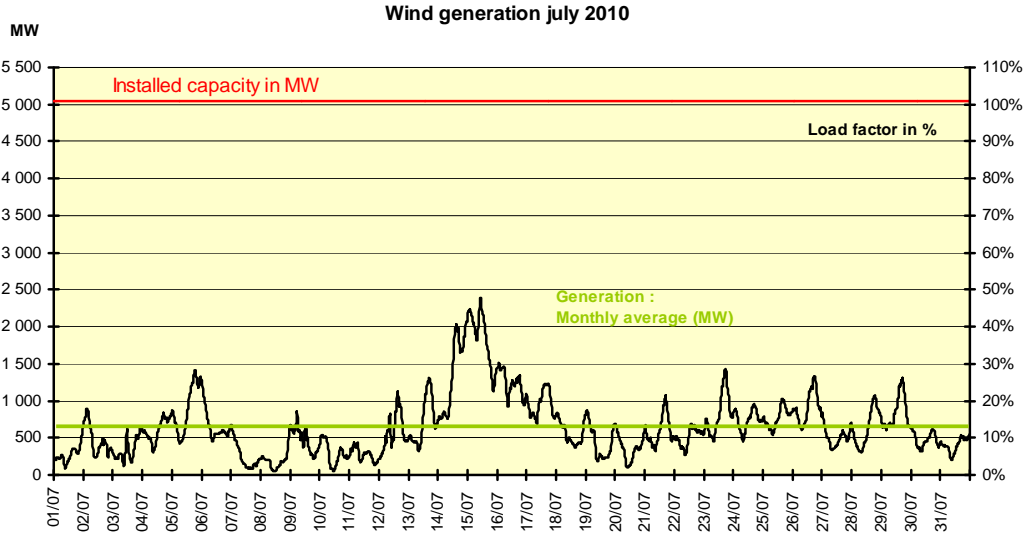
Balance of physical exchanges



Wind generation over the past month

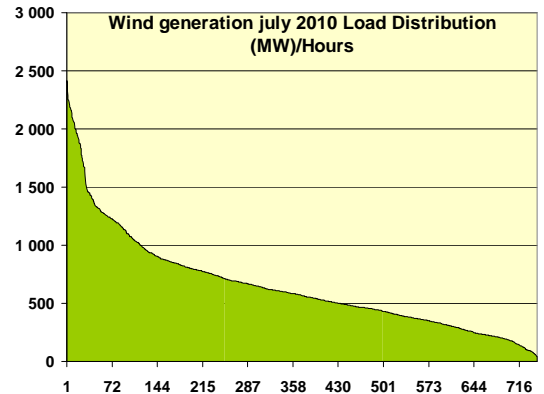
Wind generation and installed capacity

As of the end of July, installed capacity exceeded 5 040 MW. As was also the case in June the month of July continued to record relatively low levels of wind, compared with earlier months : average wind generation totalled approximately 652 MW (load factor : 13% down compared to the figures for previous months of around 20% in January, April and May and over 30% in February and March). Monthly generation fluctuated between extremes of 46 MW (load factor : 1%) on Saturday 10 July, and 2 416 MW (load factor : 48%) on Thursday, July 15.

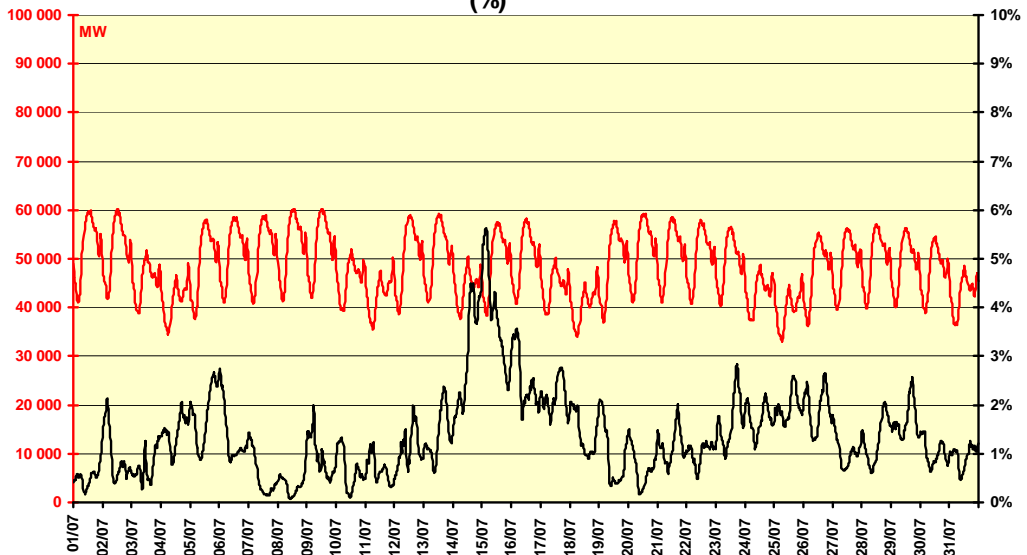


Hourly coverage rate

The rate of coverage of demand by wind generation was 1.4% on average, with a maximum peak of 5.6% reached on Thursday, 15 July at 3:00 am, when wind output was 2 201 MW and consumption 39 571 MW.



Consumption july 2010 (MW) and Rate of coverage by wind generation (%)



EXTREME values for consumption, exchanges –perimeter France*

		July		Last 12 months		Absolute**	
Gross internal consumption	Maximum	1 264 GWh	Thursday 8th	2 032 GWh	08/01/2010	2 037 GWh	07/01/2009
		60 218 MW	Thursday 8th	93 080 MW	11/02/2010	93 080 MW	11/02/2010
	Minimum	958 GWh	Sunday 25th	903 GWh	09/08/2009	856 GWh	06/08/2006
		33 075 MW	Sunday 25th	31 545 MW	09/08/2009	29 816 MW	06/08/2006
Balance of physical exchanges***	Maximum	240 GWh	Wednesday 14th	260 GWh	20/06/2010	298 GWh	08/05/2008
		12 057 MW	Wednesday 14th	12 165 MW	20/06/2010	13 746 MW	11/11/2008
	Minimum	73 GWh	Friday 9th	-140 GWh	16/12/2009	-140 GWh	16/12/2009
		-2 074 MW	Friday 9th	-7 794 MW	06/01/2010	-7 794 MW	06/01/2010

* Excl. Corsica - ** The minimum values concern the last 30 years for the physical exchange balance, and the last 5 years for consumption.

*** A positive value indicates a net export balance, a negative value indicates a net import balance.

THE ELECTRICITY MARKET

CONTRACTUAL CROSS-BORDER ELECTRICITY EXCHANGES

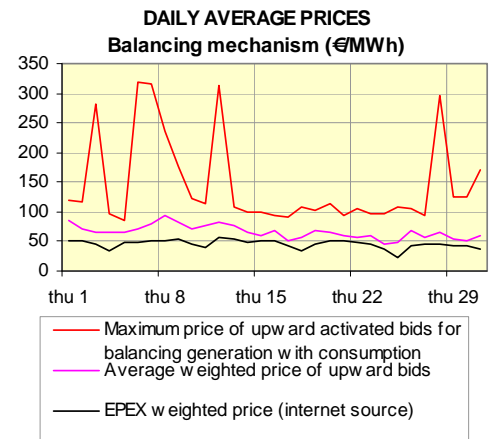
	EXPORTS			IMPORTS			CUMULATIVE VOLUME OF EXCHANGES			EXPORT BALANCE*		
	July 2010 (GWh)	Trend / July 2009	Cum. trend since 1st Jan	July 2010 (GWh)	Trend / July 2009	Cum. trend since 1st Jan	July 2010 (GWh)	Trend / July 2009	Cum. trend since 1st Jan	July 2010 (GWh)	Trend / July 2009	Cum. trend since 1st Jan
Belgium	481	n.s.**	-11%	235	-59%	-8%	716	+10%	-10%	246	-149%	+1%
Germany	1 226	103%	+30%	1 072	-38%	-3%	2 298	-2%	+6%	154	-114%	-29%
Switzerland	2 092	+4%	-3%	680	-61%	-44%	2 772	-27%	-14%	1 412	n.s.***	+23%
Italy	1 664	-2%	-10%	32	-14%	+3%	1 696	-3%	-9%	1 632	-2%	-10%
Spain	231	-56%	-77%	199	-42%	+11%	430	-51%	-44%	32	-82%	n.s.***
GB	1 117	+27%	-22%	104	-6%	+162%	1 221	+24%	+12%	1 013	+32%	-76%
TOTAL	6 811	+17%	-10%	2 322	-49%	-4%	9 133	-12%	-8%	4 489	+261%	-18%

* A negative value indicates a net import balance. ** In July 2009, the volume of exports to Belgium was 78 GWh, *** In July 2009, the export balance with Switzerland was 250 GWh ; in cumulative figures since 1st January 2010, the export balance for Spain (import) was 1 492 GWh (compared with the export balance 1 427 GWh for the same period in 2009).

BALANCING MECHANISM - BALANCE RESPONSIBLE ENTITIES

	July 2010	Deviation compared with July 2009	Trend compared with July 2009	Cum. trend since 1 st January
Balancing Mechanism				
Total energy activated upward	410 GWh	+249GWh	+154%	+11%
Total energy activated downward	317 GWh	-100GWh	-24%	+2%
Number of parties	39	-1		
Exchanges between Balance Responsible entities* via block exchange notifications (NEBs)				
Energy exchanged between BRs via NEBs	23 605 GWh	-1 099 GWh	-4%	+9%
Number of BRs	155	+5		

* Balance Responsible Entity: any legal entity who is committed to RTE, under a Balance Responsible contract, to settling the costs of the imbalances calculated retrospectively, on behalf of one or more network users attached to its scope. These imbalances result from the difference between all of the supplies and consumption for which it is responsible.



NEW INSTALLATIONS

In July, the following RTE installations were electrified for the first time : the 400 kV provisional Le Chesnoy-Méry sur Seine-Morbras overhead-underground lines, near Fontainebleau in Seine-et-Marne, within the framework of the reconstruction of the Chesnoy substation ; the 400 kV Le Broc Carros-Biançon No. 1 overhead line near Draguignan and Grasse, with a view to increasing transmission capacities to supply the Alpes-Maritimes and eastern Var areas ; the 400 kV Tamareau-Tavel No. 1 overhead line in the Hérault and Gard, following the partial replacement of conductors ; the 225 kV Aubange-Mont St Martin overhead interconnector line, after the replacement of conductors as part of the initiative to strengthen the France-Belgium interconnector ; the 63 kV Puiseux-Croix Baptiste branch-Méry No. 1 overhead-underground line, in the Val d'Oise, within the framework of reconstruction of the 63 kV Puiseux-Sandricourt loop.